



ANGLICAN
DIOCESE OF
MELBOURNE

Parish Mission Resourcing

Empowering parishes for mission

Mission-readiness Evaluation

To fulfil the vision of the Diocese, *Making the word of God fully known*, it is important that each parish purposefully engages in the mission of God. Our goal is that each parish will develop a simple plan for mission that's appropriate for their circumstances and capacity.

This short evaluation is designed to help every parish figure out the most effective action they can take as either their first step or the next step in purposefully engaging in the mission of God. It serves to give a snapshot of the mission potential of the parish and possible challenges the parish may face.

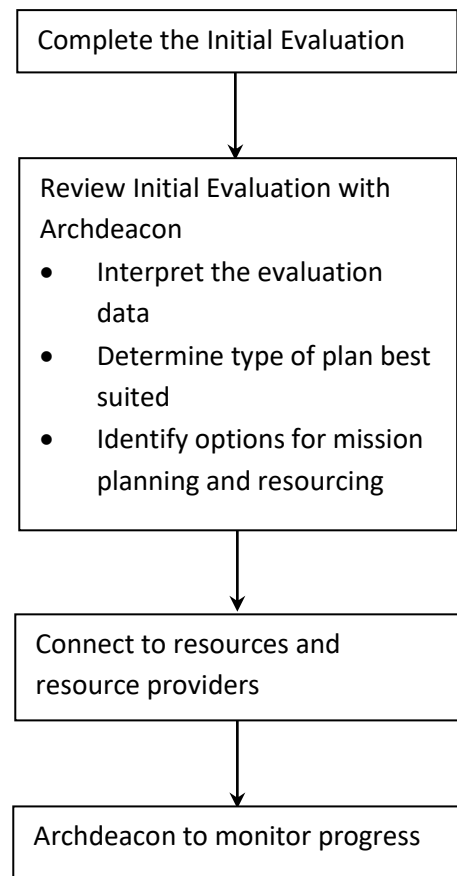
The evaluation is not a diagnosis - it's the beginning of a conversation between parish leadership and the territory Archdeacon, and commences an ongoing process of planning and resourcing. Once you've completed the form, your Archdeacon will work with you and to interpret the information and so that you can choose a way forward that is most suitable for your parish. Set out on the following page is a flowchart to explain the process.

Your Archdeacon will guide you through discerning your parish's part in the diocesan mission, help you choose a course of action and connect you with the resources and supportive relationships that will help you succeed.

Please be assured that your parish data will not be reported back to the diocese in any identifiable way, and it will not be used for any purpose other than helping you plan for mission.

In his 2016 Synod Charge, the Archbishop said *when I ... use the word 'Mission' I mean doing the things that Jesus sent us as his disciples to do. We proclaim the coming reign of God by telling people about the saving works of Jesus and bring others to the knowledge of Christ as Saviour and Lord. We are, of course, not just atomised individuals but as disciples of Jesus we are called into life as members of his body, the Church. Forming disciples as members of Christian community and then together doing the things that Jesus has commanded is at the heart of Mission. Mission must be about engagement in the world and with people who do not share our position of committed Christian belief.*

Empowering Process





ANGLICAN
DIOCESE OF
MELBOURNE

Mission-readiness Evaluation

Using this form

We suggest you use this form digitally, using MSWord. The table cells will automatically expand as needed, and you can add extra rows to tables by hitting the TAB key when you get to the last cell in the table.

Parish	St James Thornbury – Parish of South Darebin
Date	June 2018

Mission Action Plan or equivalent

Date of the Mission Action Plan	
Date of most recent revision	June 2018
How often does the parish council review progress of implementation?	
Percentage of actions actively being implemented	
Percentage of actions fully implemented	

Stipended ministry staff including clergy and ASLM's

Name	Role & Summary of Responsibilities	Minimum Expected Hours Per week (if full-time, write F/T)
Andrew Oddy	Services at St James' are conducted on Sunday and Thursday mornings. The weekly service at St Paul's is conducted on Sunday evening	.6 of the F/T appointment to the Parish of South Darebin

Growth Outcome Indicators

Average **weekly** worship service attendance (include children) for past 5 years (ie average figure for each year). Break down by congregation.

Congregation	4 Years ago	3 Years ago	Year Previous To Last	Last Year	This Year
St James'	30				

Estimated average age of worship service attenders (including children) Break down by congregation

Congregation	Location	Current attender age breakdown	
St James'		0-10	----
		10-20	-----
		20-35	-----
		35-50	_____
		50-65	5
		65 plus	20
		0-10	
		10-20	
		20-35	
		35-50	
		50-65	
		65 plus	
		0-10	
		10-20	
		20-35	
		35-50	
		50-65	
		65 plus	

Membership by Electoral Roll

St James'	4 Years ago	3 Years ago	Year Previous To Last	Last Year	This Year
Parish Electoral Roll total number			60	55	

Commitments and Commitment Rites

	4 Years ago	3 Years ago	Year Previous To Last	Last Year	This Year
Baptisms: children baptised at parents request each of the past 5 years			8	3	2
Baptisms: all persons baptised at their own request each of the past 5 years					
Confirmations: annual figure for each of the past 5 years			2		
First-time professions of faith annual figure for each of the past 5 years					
Re-commitments to Christian faith (i.e. after a lapse): annual figure for each of the past 5 years					

Mission Target Group

A Mission Target Group is defined as a demographic grouping of people that your parish is seeking to engage and serve. Many parishes identify 'families with pre-school children' as a Mission Target Group. Others may identify 'people who are seeking to improve their English' as a Mission Target Group. A Mission Target Group can be defined by location, life stage, special need or any other criteria that help your parish to find a specific way to engage and serve people.

Typically each congregation will have specific Mission Target Group. If none of the congregations in the parish serve and identified Mission Target Group, leave this section blank

Congregation	Mission Target Group
Under consideration	

Outreach and /or community service activities

Describe the outreach or service activities your parish is currently running whereby you engage and serve unchurched people in your area. Examples may be: playgroup, Mainly Music, kids club, English language classes, meals program, or community garden.

Activity	How often does it run?	How many people participate?
Community Outreach Pancakes on Shrove Tuesday	Annually	10 - 20
Parish Luncheon – 3 centres	Monthly	15-20

Embrace the Gospel activities

Embrace the Gospel activities are specifically designed to help people understand the gospel and make a faith commitment. They're specifically geared to people on the journey toward a faith commitment rather than those who already believe. Examples include Alpha, Christianity Explained and Pilgrim.

Activity	How often does it run?	How many people participate?
None at this stage		

Discipleship activities

For the purpose of this evaluation, Discipleship activities are those that are intended to form believers in the ways of Jesus – i.e. shaping their beliefs, values, thinking and behaviour to life and teaching of Jesus. These may include activities such as catechesis in its various forms, bible studies, missional communities, life transformation groups and prayer triplets.

Activity	How often does it run?	How many people participate?
Lenten Studies – 3 centres	Annually	12 -18
Parish retreat	Annually	3 -5

Financial health over the past 5 years – St James'

Year	Total Budgeted Income	Total Actual Income	Total expenditure	Surplus/ Deficit	Offertory Income including electronic	Parish Fund raising Funds raised by parish activity	Other Income (rentals, investments etc)	Parish giving to other entities
12/13		\$112,446	\$138,770	\$26,324	\$24,534	\$3,260	\$84,399	\$1,058
13/14		\$115,334	\$113,023	\$2,311	\$25,823	\$3,301	\$115,600	\$775
14/15		\$118,377	\$99,212	\$19,165	\$29,269	\$3,168	\$85,940	\$976
15/16		\$97,587	\$101,509	-\$3,922	\$26,624	\$2,543	\$68,419	\$809
16/17		\$117,674	\$110,029	\$7,645	\$24,244	\$1,052	\$92,376	\$1,304

Buildings and Facilities- St James'

Copy and paste the table below if you have multiple sites where worship services are held

Suburb where facilities are located	Thornbury
Useable worship area seating capacity	
Social space (area to chat informally after the service) contiguous with worship area (in Square Metres)	30
Social space in buildings separate from Worship area (in Square Metres)	
Number of toilets in buildings contiguous with worship area	4
Car parking spaces available on church property	0
Car parking spaces available on a weekend within 200 Metres of church property	40
Number of rooms available for children's program during Worship Services	1
Total area available for children's program during Worship Services (in Square Metres)	20

Next Steps...

Once you've completed the evaluation, your archdeacon will help you make sense of the data, find your best opportunities and look at the kind of planning that might best suit your parish. Set out below are some of the options you might consider:

Planning Options

Continue Current Plan

If your parish has a high capacity for mission, a solid plan and is making good progress in achieving your goals, you'll be encouraged to keep forging ahead.

Address immediate challenges

If your parish needs to address cultural or financial challenges before developing a mission plan, your archdeacon may recommend you get a consultant or coach to help you get things on a sustainable footing before you tackle a mission plan.

Make a simple change

Simple changes include things like improving your parish web presence, implementing a parish database or creating a welcome and integration program.

If your parish is new to mission planning, or has struggled in the past to implement a plan, beginning with something simple might be your best option.

If your parish has a mission plan, but the review has shown the need to do something more, this might also be a good option for you.

This means you might create a plan with a lifespan of 3-6 months. Your archdeacon will help you connect with the people and resources to help you.

A bigger plan

If your parish is ready to begin a new strategic plan or to venture into a new area of ministry, this could be a good option for you. Your archdeacon may encourage you to apply to a 1-3 year program offered by the Parish Mission Resourcing Team. Program areas include Children and Families Ministry, Youth Ministry and overall Parish Renewal.

Re-Imagine your parish

Maybe your Parish is facing really big questions – that might be due to your congregation outgrowing your building, or your budget outgrowing your congregation. This is where you'll need help from your bishop, and perhaps specialist advice re property. Your Archdeacon will help you set up the conversations you need to have.